

Application instructions

You will need the following tools :



1 Spray bottle filled with water and ...



... a few drops of washing solution



1 Razor blade window scraper



1 Rubber squeegee



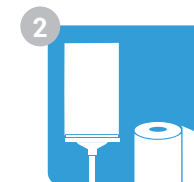
1 Cutter



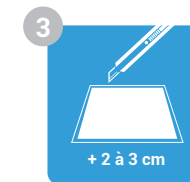
1 Roll of paper towels



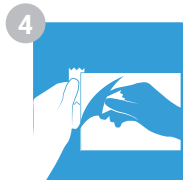
Using the window scraper and the spray bottle of soapy water, clean the window pane thoroughly.



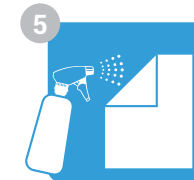
Wipe the window frame with a rubber squeegee and a paper to



Using the cutter, cut a piece of film to a size 2 or 3 cm larger than the window pane



With the help of 2 pieces of scotch tape separate the film from its protective liner.



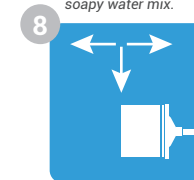
While pulling the film apart from its protective liner, spray the film's adhesive side generously with the soapy water mix.



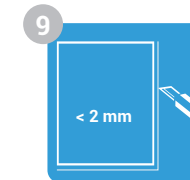
Turn the film around and apply its adhesive side to the window pane.



Spray the film to allow the squeegee to slide easily over it. .



To attain a good adherence, working from top to bottom, scrape with the squeegee from the center towards the right and left edges.



Cut the film to within 2 mm of the window pane's edge. The film shouldn't touch the frame. Then squeegee to smooth out any remaining air bubbles.

5° Minimum application temperature !

METHOD

The surface to be bonded must be free from dust, grease or other contaminants.



Our recommendations

- Application should be done very carefully to obtain optimum results.
 - If a few defects are visible after the application, **they should disappear after 3 weeks.**
 - Do not clean the film during the drying period (3 to 5 weeks).
 - After the drying period, the film may be cleaned with slightly soapy water. Do not use abrasives or products containing alcohol.
- Please refer to our prescription table or contact us for any question



KITPOS
Surface
< 3m²



MATPOS
Surface
> 3m²